

The Magical Christmas Guide to Leeds

by Pickard Properties

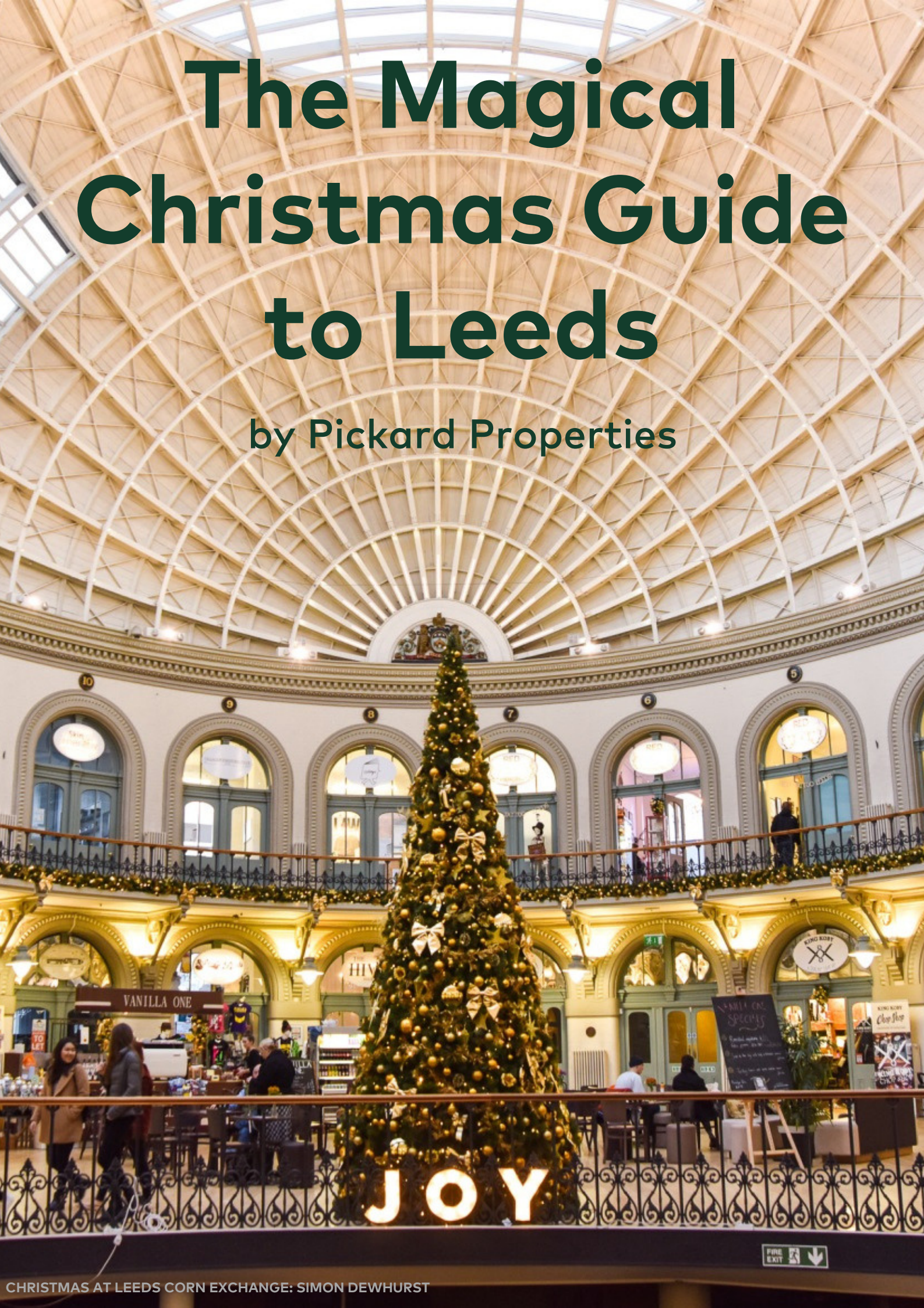




TABLE OF CONTENTS

03

WHO ARE
PICKARD
PROPERTIES?

05

FESTIVE
EVENTS
ACROSS LEEDS

14

WHERE TO
SHOP AND
OPENING
TIMES

19

FOOD AND
DRINK THIS
HOLIDAY
SEASON

35

CHARITIES:
HELPING
OTHERS OVER
CHRISTMAS

37

CHURCH
SERVICES:
WHERE TO
SING SOME
CAROLS



Victoria Arcade



Leeds Christmas Lights - credit Zagni Photography for Leeds City Council



Leeds German Christmas Market - credit Zagni Photography for Leeds City Council



LEEDS CHRISTMAS LIGHTS - CREDIT ZAGNI PHOTOGRAPHY FOR LEEDS CITY COUNCIL

Pickard Properties



50 YEARS OF PROPERTY RENTAL

A family company established in Leeds over 50 years ago, Pickard Properties is one of the leading property rental companies in the city.

Catering to students, young professionals, and the commercial sector, Pickard Properties has a large portfolio throughout Leeds, including the popular areas of:

Headingley, Burley, Hyde Park, Woodhouse, and Horsforth.

With a keen eye on the student market, Pickards was voted No. 1 Landlord 2006, Best Large Landlord 2013, 2014, and Most Socially Responsible Landlord 2015 by Leeds students.

What's more, Pickard Properties is a member of UNIPOL Code of Standards (Golden owners), as well as Leeds Property Association, Leeds Landlord Accreditation Scheme, the Residential Landlord Association, and The Property Redress Scheme.

This guide was created so that – whether you are a student, a young professional, a family, or even a visitor – you don't miss out on all that Leeds has to offer this holiday season. Enjoy!

“
The very
best that
Leeds has to
offer over
the holiday
season.
”



LEEDS CHRISTMAS LIGHTS - CREDIT ZAGNI PHOTOGRAPHY FOR LEEDS CITY COUNCIL



Spinning Acres

FAR HEADINGLEY - LS6

Coming soon from Pickard Properties...

A unique private rental development, offering the discerning homemaker an exciting range of luxuriously appointed rental properties within a tranquil woodland setting in Far Headingley.

Just three miles to the north west of Leeds city centre and to the north of Headingley, Spinning Acres is conveniently located for access to everything you might need, yet tucked away enough for you to enjoy birdsong every morning instead of the hustle and bustle of city living.

The Spinning Acres development is made up of new builds and stylishly renovated Victorian properties, creating a luxurious urban village that is perfect for everyone: from recent graduates, young professionals, families, those between jobs or houses, retired people, or those looking to downsize. These stylish homes will provide a secure, long-term living option.

From contemporary living areas to skilfully engineered kitchens at the heart of the home, we have thought of everything to make your long-term rental experience at Spinning Acres perfect.

Get in touch today for your own private viewing of the site, including those homes that have been completed so far.

Call us on 0113 274 6642, email us at pickard@pickardproperties.co.uk or visit us at:
26-30 North Lane
Headingley
Leeds
LS6 3HE





THE MAGICAL CHRISTMAS GUIDE TO
LEEDS PRESENTS ...

FESTIVE EVENTS ACROSS LEEDS

There's no doubt that when the Christmas lights get switched on and the big Christmas tree is erected in the middle of the Trinity Shopping Centre, Leeds becomes one of the most magical and bustling places to be in the UK.



FEEL THE CHRISTMAS SPIRIT BY VISITING ...

The Christkindelmarkt: Millennium Square

From the middle of November onwards, Leeds is blessed with an array of festive markets throughout the city centre, and each one is well worth checking out.

One of the most renowned Christmas markets in the UK, the German Christkindelmarkt in Millennium Square is sprinkled with delights that are packed within a scenic festive village.

There are over 40 traditionally decorated chalets selling a range of toys, decorations, and food and drink, accompanied by a selection of cosy indoor venues, which this year includes Santa's Breakfast Experience.

The Leeds Christkindelmarkt is open from November 10 to December 24.

Monday to Saturday: 10:30am to 9:30pm

Sunday: 10:30am to 6:30pm





Popular Festive Treats

Some of the most popular stalls and attractions at the Christkindelmarkt include:

1. Alp Chalet — an indoor Bavarian eatery.
2. Mead House No. 5 — a honeywine tavern, found opposite the merry-go-round.
3. Lowental's Kuh Stall — a large indoor stall that sells beer, mulled wine, coffee, hot chocolate, and soft drinks.
4. Brotzeithutte — a small hut selling a range of traditional German delicacies, including smoked sausage.
5. Ski Hütte — a traditional ski-style cabin that serves a variety of hot and cold drinks.

For more information, please [click here](#).



LEEDS GERMAN CHRISTMAS MARKET - CREDIT ZAGNI PHOTOGRAPHY FOR LEEDS CITY COUNCIL



LEEDS GERMAN CHRISTMAS MARKET - CREDIT ZAGNI PHOTOGRAPHY FOR LEEDS CITY COUNCIL



LEEDS GERMAN CHRISTMAS MARKET - CREDIT ZAGNI PHOTOGRAPHY FOR LEEDS CITY COUNCIL



Hidden Christmas Market

KIRKSTALL ABBEY

An alternative and lesser known event, this year Kirkstall Abbey is holding a hidden festive market that takes its inspiration from the Brothers Grimm.

There will be live acts including DJs and local bands, independent retailers, streetfood, and a whole lot of Christmas.

On top of this, there will also be a fairy tale themed bar, alongside craft workshops.



LEEDS GERMAN CHRISTMAS MARKET - CREDIT ZAGNI PHOTOGRAPHY FOR LEEDS CITY COUNCIL



LEEDS HIDDEN CHRISTMAS MARKET - (C) JAMES ABBOTT-DONNELLY WWW.JAMESAD.COM



Opening times for the Hidden Christmas Market at Kirkstall Abbey

Tickets must be bought in advance for those wanting to attend the Hidden Christmas Market, and the extravaganza shall run over the course of eight days in the lead up to Christmas.

- Thursday December 14: 6pm – 11pm
- Friday December 15: 6pm – 11pm
- Saturday December 16: 11am – 4pm | 6pm – 11pm
- Sunday December 17: 11am – 4pm | 6pm – 11pm
- Monday December 18: 6pm – 11pm
- Tuesday December 19: 6pm – 11pm
- Wednesday December 20: 6pm – 11pm
- Thursday December 21: 6pm – 11pm

For more information, please [click here](#).





LEEDS CHRISTMAS LIGHTS - CREDIT ZAGNI PHOTOGRAPHY FOR LEEDS CITY COUNCIL

Christmas at Kirkgate

LEEDS KIRKGATE MARKET

As always, Christmas at Kirkgate is a great time for shoppers, and the market has a range of events happening throughout the Christmas season this year, including:

- Christmas Market – November 18 'til December 16 (10.00am – 5.30pm)
- Christmas Carol (theatre production) – November 27 until December 2 (7.00pm & 8.30pm each night)
- T'was the Night Before Christmas (theatre production) – the first four Saturdays in December (11am & 2pm)
- Meanwood School Choir – December 8 (1:30pm – 2:30pm)
- Christmas Vintage Market – December 2 (10.00am – 5.00pm)
- Christmas Record Fair – December 9 (10.00am – 5.00pm)
- Santa's Grotto – the first four Saturdays in December (11am – 3pm)

**Fun for all
the family this
festive
season!**



LEEDS CHRISTMAS LIGHTS - CREDIT ZAGNI PHOTOGRAPHY FOR LEEDS CITY COUNCIL



The Magical Lantern Festival: Roundhay Park

Hosted in the landscaped grounds of Roundhay Park for the second year in a row, the Magical Lantern Festival is one of the most colourful and spectacular festivals in the UK.

Featuring thousands of hand-sculpted illuminated lanterns inspired by Chinese and British culture, there is no doubt that for a few dark nights, Roundhay Park will be one of the most magical places to be – not just in Leeds, but in the UK!

Ticket prices range from £10.67 to £14.92.

The festival takes place from November 24 through to January 1.

For more information, [click here](#).



MAGICAL LANTERN FESTIVAL B - 2015



MAGICAL LANTERN FESTIVAL A - 2015



MAGICAL LANTERN FESTIVAL C - 2015



Christmas Shows

There are a great number of spectacular Christmas shows happening throughout Leeds this December, with many of them being performed at the West Yorkshire Playhouse.

The Lion, The Witch, and The Wardrobe

The first major production being showcased at WYP is The Lion, The Witch and The Wardrobe, which is to be directed by Olivier Award nominee, Sally Cookson. Produced as a collaboration between the West Yorkshire Playhouse, Elliot Harper Productions and Catherine Schreiber. The show itself is of course based on the classic novel by C.S. Lewis and promises to be an enchanting addition to anyone's Christmas.

The play runs from November 29 through to January 21.

Crumble's Search for Christmas

Also at the West Yorkshire Playhouse, Crumble's Search for Christmas is a newly commissioned piece for small children from Robert Alan Evans, the creator of The Night Before Christmas.

Crumble's adventure shall take place from November 25 through to December 30.

Harry Potter and the Chamber of Secrets in Concert

Taking place at the First Direct Arena, and as part of a national tour, the film Harry Potter and the Chamber of Secrets will be projected in high-definition alongside a live orchestra performance of John Williams's iconic score.

Fat Friends – The Musical

Throughout November and the first two days in December, Leeds Grand Theatre is to play host to the world premiere of Fat Friends – The Musical. Taken from the hit ITV television series starring James Corden and Alison Steadman, the production sees the nation's favourite group of dieters return at the Headingley branch of Super Slimmers.

Fat Friends is running from November 7 through to December 2, before embarking on a UK tour.

The show stars Jodie Prenger.



Hyde Park Picture House

73 Brudenell Road
LS6 1JD

Despite the war breaking out just a few months before, Hyde Park Picture House first opened its doors to the public on November 7 1914. It was and probably still is the cosiest cinema in Leeds.

While Leeds has gained multiplex cinemas over the years that can seat thousands of people at a time, you can always feel at home at the Hyde Park Picture House.

Here are Hyde Park Picture House's festive film offerings for the season:

Jingle Bell Rocks:

Fri 15, 6.00 PM to 7.56 PM

It's A Wonderful Life:

Mon 18, 6.00 PM to 8.32 PM (subtitled)

Tues 19, 8.00 PM to 10.33 PM

Weds 20, 8.00 PM to 10.33 PM

Thurs 21, 6.00 PM to 8.33 PM

Fri 22, 11.00 AM to 1.33 PM (BYOBaby screening) and 8.00 PM to 10.33 PM

Sat 23, 8.00 PM to 10.33 PM

Sun 24, 3.00 PM to 5.33 PM

A Muppet Christmas Carol:

Sun 17, 11.00 AM to 12.47 PM (Autism friendly screening)

Sat 23, 12.00 PM to 1.47 PM





THE MAGICAL CHRISTMAS GUIDE TO
LEEDS PRESENTS . . .

SHOPPING OVER THE CHRISTMAS PERIOD

Leeds has always been known for its exquisite year-round shopping opportunities, and during the Christmas period there is ample opportunity to enjoy your Christmas shopping. In fact, in November 2016, Leeds was named the best shopping destination in the country by Rough Guide Britain. With that in mind, here's what's happening in some of Leeds's biggest shopping centres.



Trinity Leeds

At the very heart of the city, Trinity Leeds holds over 120 stores and restaurants and as always, has extended its opening hours throughout the Christmas period.

From November 12, Trinity's hours of opening are:

- Monday – Saturday 9am – 9pm
- Sunday – 11am – 5pm

The Christmas and New Year's opening hours are:

- Sunday December 24 – 11am – 5pm
- Monday December 25 – CLOSED
- Tuesday December 26 – 9am – 6pm
- Sunday December 31 – 11am – 5pm
- Monday January 1 – 11am – 5pm

Individual stores and restaurants will operate on their own schedules, so it's worth checking with them before you head out.

Trinity Kitchen and the Everyman cinema are also open later throughout the Christmas period.

You can find an entrance to Trinity Leeds at 27 Albion Street, LS1 5ER.

Telephone: 0113 394 2415

Email: info@trinityleeds.com

For more information, please click [here](#).



TRINITY_LAUNCH_NIGHT_210313_017



LEEDS CHRISTMAS LIGHTS - CREDIT ZAGNI
PHOTOGRAPHY FOR LEEDS CITY COUNCIL





Victoria Gate

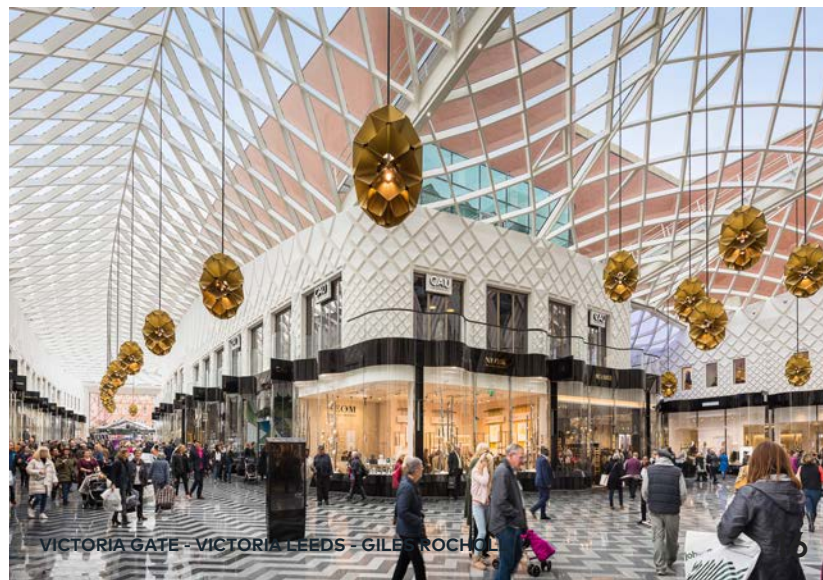
LEEDS' NEWEST
LUXURY SHOPPING
CENTRE

Newly opened in 2016, Victoria Gate is Leeds' latest shopping centre offering, and is home to both John Lewis and Harvey Nichols.

With a range of luxury brand stores, restaurants, and of course, the shopping centre's very own casino, you can find yourself spending hours browsing here.

For those searching for stocking fillers, Anthropologie is definitely the place to be, as we have it on good word that their notebooks are "to die for".

For something very special and a little more upmarket, Aspinall of London is definitely worth a visit for luxury leather goods.





Victoria Gate Opening Hours

From December 11, Victoria Gate's opening hours are:

- Monday – Friday - 10am – 8pm
- Saturday December 16 – 9am – 8pm
- Sunday December 17 – 11am – 5pm

From Monday December 18, the centre's opening hours are:

- Monday – Friday - 10am – 8pm
- Saturday December 23 – 9am – 8pm
- Sunday December 24 – 11am – 5pm
- Monday December 25 – CLOSED
- Tuesday December 26 – 9am – 6pm

From Wednesday December 27, the centre's opening hours are:

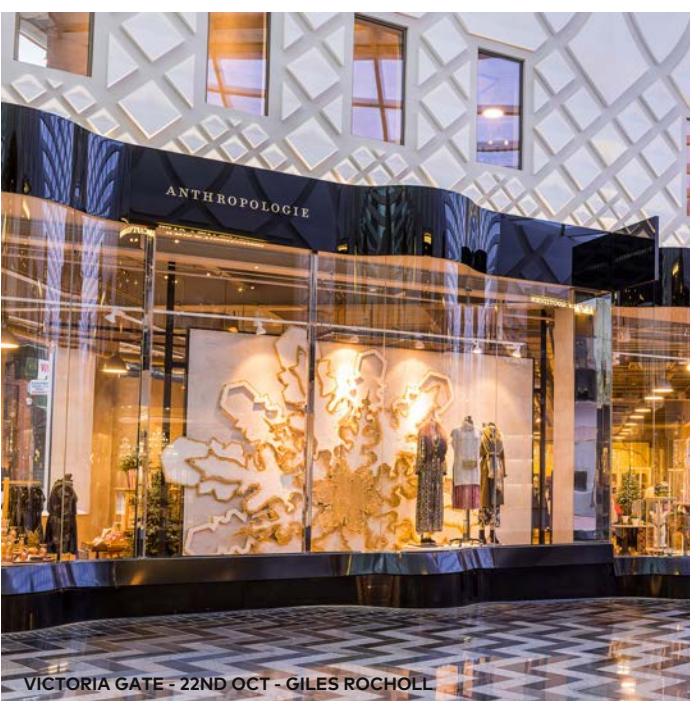
- Wednesday – Friday - 10am – 7pm
- Saturday December 30 – 9am – 7pm
- Sunday December 31 – 11am – 7pm

The casino is open 24/7, aside from Christmas Day, when it is closed.

You can find Victoria Gate on George Street in Leeds city centre, LS2 7AU

Telephone: 0113 245 5333

For more information please click [here](#).





White Rose Centre

Located in Beeston, just outside of Leeds city centre, the White Rose Centre is a great place to shop without being affected by winter weather.

The centre is home to 124 stores and restaurants, including Next, Primark, Schuh, H&M, Marks and Spencer, GAME, Disney Store, Pandora, and Lush.

The centre is open throughout the week until 10pm on the lead up to Christmas , closing at 8pm on Saturdays and 5pm on Sundays.

The Christmas opening hours are:

- Saturday December 23 – 8am – 10pm
- Sunday December 24 – 10am – 4pm
- Monday December 25 – CLOSED
- Tuesday December 26 – 8am – 8pm
- Wednesday December 27 – Friday December 29 – 10am – 9pm
- Saturday December 30 – 9am – 6pm
- Sunday December 31 – 11am – 5pm
- Monday January 1 – 10am – 6pm

Free parking is available throughout the centre.





THE MAGICAL CHRISTMAS GUIDE TO
LEEDS PRESENTS . . .

FOOD AND DRINK THIS FESTIVE SEASON

Within every great restaurant and bar, is a special place for you to enjoy the Christmas season with friends & family.

We have hand selected some of the best and most loved restaurants and bars throughout Leeds that are preparing extra special welcomes for their guests this festive season.



The Backroom

CALL LANE

Situated under the railway bridge on Call Lane, The Backroom offers plenty of comfy booth seating, an extensive drinks selection, and a large dance floor – all of which can be booked out for private parties. Or you can simply book a table or two for your Christmas group instead.

The experienced team offer tailor-made packages for a wide range of events and group bookings during the festive period and beyond, whether it's for two or 200 people. Your event can be designed to include cocktail masterclasses, too.

You can find The Backroom on 50a Call Lane, Leeds, LS1 6DT

Email: sales@thebackroomleeds.co.uk

Telephone: 0113 2438666

For more information, please [click here](#).





Crust & Crumb

CAKES, SALAD
& FLATBREAD:
WHAT MORE
COULD YOU
WANT?

Now entering it's seventh year, Crust & Crumb is one of the most popular little cafes in Chapel Allerton.

Open seven days a week in December, Crust & Crumb is one of the most picturesque places to enjoy a breakfast or cake during the festive season.

From salads and flatbreads, through to pies and sandwiches, there's a whole range of food to be experienced here this month.

The shop will be taking orders for cakes, mince pies, platters, and artisan bread throughout December, ready for the big day.

Crust and Crumb can be found at 110B Harrogate Road, LS7 4NY.

Email: info@crustandcrumbbakery.co.uk

Telephone: 0113 268 0098

For more information, please [click here](#).



LEEDS CHRISTMAS LIGHTS - CREDIT ZAGNI PHOTOGRAPHY FOR LEEDS CITY COUNCIL





Friends of Ham

IF GREAT HAM AND
DELICIOUS CHEESE
IS YOUR THING, LOOK
NO FURTHER

One of the most respected charcuterie bars in the UK, Friends of Ham is this December opening its Christmas shop in the Grand Arcade to sell merchandise, gift vouchers, and other seasonal items.

Friends of Ham will also host a special Wine Fair on Sunday December 3 from midday through to 6pm, with tickets being priced at £15.

What's more, a wreath-making class with Wakefield florist Ruby Bloom is to take place on Wednesday December 6 at 6:30pm. Tickets are available at £55 for this, which includes mince pies and mulled wine and of course, your very own wreath.

Friends of Ham is located at 4-8 New Station Street, Leeds, LS1 5DL.

For more information, please [click here](#).





George & Joseph

ONE OF THE BEST
INDEPENDENT
CHEESEMONGERS IN LEEDS

The only specialist cheesemongers in Leeds, George & Joseph sources and stocks a selection of the finest locally produced Yorkshire cheeses alongside some of the best cheese from across the UK and further afield.

**Stocking
some of the
finest locally
produced
cheese**

This is the place to go for your Christmas and New Year cheeseboards, cheese hampers, and Lishman's pork pies – in three different sizes.

George and Joseph also stock fantastic beers and gin made locally by the Harewood Food and Drink Project, as well as chutney and biscuits for your cheese. Throughout December, George & Joseph are open on Sundays, including between Christmas and New Year.

George and Joseph is located at 140 Harrogate Road, Chapel Allerton, LS7 4NZ, and in Leeds city centre.

Email: cheese@georgeandjoseph.co.uk
Telephone: 0113 345 0203

For more information and the website, please [click here](#).





Hyde Park Book Club

JAZZ, PERFORMANCES,
LIVE MUSIC AND MORE

A new arts space on Hyde Park Corner, serving coffee, wine, beer and food, Hyde Park Book Club is a unique and chilled out venue to visit.

During the day it's a relaxed space to meet friends, enjoy drinks and food, or to read and write.

In the evening, there are an array of talks, performances, plays, live music, DJs and exhibits going on.

Hyde Park Jazz Club is held here every Thursday, and there's an Open Turntables night on December 8.

You can find Hyde Park Book Club at 27-29 Headingley Lane, LS6 1BL.

Telephone: 0113 274 9888

To find out more information, please check out their website [here](#).





Ice Scoop Gelato

A WIDE RANGE OF DELICIOUS AND LUXURIOUS DESSERTS

Ice Scoop Gelato started out two years ago in Hyde Park, Leeds. Since then it has gone on to open three further cafes in Cross Gates, Harrogate and Roundhay. The Roundhay restaurant also serves authentic Indian Cuisine.

Ice Scoop Gelato are famed for its wide range of delicious desserts and indulgent treats, but primarily, Ice Scoop Gelato are well renowned for its gorgeous gelato in unique flavours.

Go along and sample their uncompromising craftsmanship and attention to detail, which elevates the gelato to an art form.

Current offers include:

- Freak Shakes on 2 for 1 every Friday
- Two waffles for £10 every Wednesday
- Coffee and cake for £4 between 12pm & 4pm daily

At the Clock Buildings restaurant in Roundhay, the Christmas Menu is now available. There is a two course meal starting from £20, with a vegetarian option.

Telephone: 0113 278 0586

For more information, please click [here](#).



**Freak Shakes
on
2 for 1
every Friday!**





Northern Monk Brewing Company

A GREAT PLACE FOR A
GREAT PINT

Located on the South Bank of Leeds city centre, Northern Monk's Refectory is a great place to get out and relax away from the hustle and bustle of the shops.

The brewery is throwing a Christmas Gift Fair on December 12 from 6pm – 9pm where people will also be able to pre-order from special Christmas menus. What's more, a Boxing Day party is also being hosted on December 26.

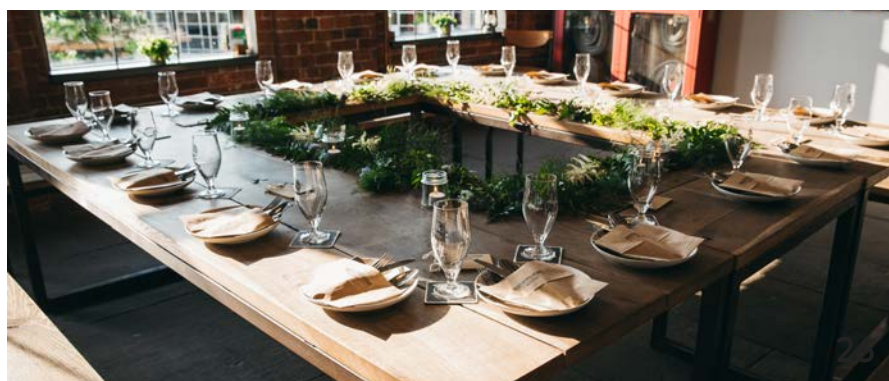
With Christmas being one of the Refectory's busiest times of the year, the bar is available for private functions, as well as tastings and open brew days.

Discover the place where 20,000 pints are created each week and distributed all over the world this Christmas.

NMBCo is located at The Old Flax Store, Marshalls Mill, Holbeck, LS11 9YJ.

Email: bookings@northernmonkbrewco.com
Telephone: 0113 243 6430

For more information please, [click here](#).





Pinche Pinche

**FRESH MEXICAN FOOD,
TAPAS STYLE!**

If you have a passion for freshly prepared Mexican food, Pinche Pinche, based in Chapel Allerton, is a fun and vibrant restaurant in the heart of the town.

Offering a vast menu consisting of tapas-style dishes as well as everyone's favourite burritos and enchiladas.

Catch up with friends and family over the festive period, and enjoy set menus for groups of six or more, featuring a variety of delicious Mexican tapas dishes.

Priced from just £12.50-£18.00pp, including vegetarian and vegan options.

Celebrate with 2-4-1 cocktails between 5pm and 7pm every weeknight.

You can find Pinche Pinche at 116 Harrogate Road, LS7 4NY.

Telephone: 0113 268 1110

For more information, please visit the website here.





Pintura Kitchen and Bar

LOCATED NEXT TO TRINITY
LEEDS

Inspired by the vibrant, food-crazed, culture of the Basque Country, Pintura creates authentic tapas using the finest Spanish produce and best local ingredients, to produce a modern twist on traditional Basque recipes.

“
A menu of festive
'Copas' and
cocktails made
with a selection of
our 147 gins
”

Celebrate Christmas at Pintura with its Basque-inspired banquet: Banquete de Navidad. Whether it's a Christmas knees-up with your colleagues, or a festive feast with your loved ones, enjoy four courses of your favourite Pintura dishes for just £31.95pp or three courses for £27.95pp. Pintura will also be serving up the best G&Ts in their gin bar all year round.

Pintura is proud to present a new wine & tapas experience with Executive Chef, Greg Lewis. Indulge in an interactive five-course meal, be a part of the preparation of each dish, and enjoy a full wine flight plus a glass of cava on arrival. All for £75pp! Experiencia Gastronomica vouchers will be on everyone's wish list this Christmas.

Pintura Kitchen and Bar is located at Unit 2.36, Trinity Leeds, LS1 6AP.

Email: info@pinturakitchen.co.uk
Telephone: 0113 4300 915

For more information, please [click here](#).

PINTURA
BASQUE KITCHEN & BAR



Roots & Fruits

TRY SOME DELICIOUS VEGGIE FAYRE

Celebrating its 24th anniversary this year, Roots and Fruits is practically an institution – an independent vegetarian cafe that supports local suppliers and other ethical businesses.

You can expect a warm and knowledgeable welcome at Roots and Fruits. Everyone is keen to showcase fresh and imaginative dishes, alongside tried and tested favourites, and to show that plant-based food can be enjoyable and accessible for everyone.

From cakes and coffees through to three course meals, the café promises to be one of the most festive places to enjoy vegetarian food this Christmas.

You can find Roots & Fruits at 10 - 11 Grand Arcade, Leeds, LS1 6PG.

Telephone: 0113 242 8313

For more information or for the website, please [click here](#).





RELAX AND DINE AT ...

Salvo's Restaurant

A buzzing Italian restaurant in Headingley, Salvo's has been serving delicious food to the people of Leeds since 1976.

Whether you are wanting to enjoy a Christmas lunch with colleagues, a private dining experience with friends and family, or a traditional Italian festive feast, Salvo's is a great option. For group bookings of eight or more, and enquiries about private Christmas functions, get in touch today.

This year's special three course Christmas menu costs just £25pp for lunch or £28pp for dinner, and features turkey escalope, pork belly and an ox cheek ragu pasta dish. Vegetarian options are also available.

You can find Salvo's at 115 & 107 Otley Road, Headingley LS6 3PX.

Email: dine@salvos.co.uk

Telephone: 0113 2755017 & 0113 275 2752

For more information, please click [here](#).





Tharavadu

FEATURED IN THE
MICHELIN RESTAURANT
GUIDE & GOOD FOOD
GUIDE FOR 2017

One of the most respected restaurants in Northern England, and mentioned in both the 2017 Michelin Restaurant Guide and the Good Food Guide UK, Tharavadu is a hidden gem found just a short walk from Leeds train station.

Serving authentic Kerala cuisine, the restaurant thrives on tradition and quality, and a whole host of celebrities have dined there, including Chef Ken Hom, Graeme Swann, Chris Kamara, and David Gower.

With a shelf full of awards at hand, there's no reason why you can't get out and enjoy Tharavadu this Christmas, but be warned: you may have to book a couple of weeks in advance.

You can find Tharavadu at 7/8 Mill Hill, Leeds, LS1 5DQ

Email: info@tharavadurestaurants.com
Telephone: 0113 244 0500

For more information, please [click here](#).





LET GO AND PARTY ON AT ...

The Viaduct Showbar

Located on Lower Briggate, The Viaduct Showbar is one of the popular bars throughout the year, but special things are planned for this year's Christmas festivities.

Open seven days a week, the bar is to put on a Christmas show every Friday and Saturday evening throughout December, and is offering two for one on drinks every Friday and Sunday.

When it comes to New Year, the bar is planning on throwing a huge party, and is to take a look back through all the highlights and musical numbers of 2017.

You can find Viaduct Show Bar at 11 Lower Briggate, Leeds, LS1 6ER.

Telephone: 0113 244 3255

For more information, please click [here](#).





Wapentake

"A LITTLE PIECE OF YORKSHIRE"

Wapentake wanted to create "a little piece of Yorkshire", by combining a bakery, cafe and bar to serve and support the local community.

The menu is as local as possible, and ingredients are sourced daily from various neighbours in Kirkgate Market. The back bar is dedicated to local distilleries as well as the fridges, cask lines and keg lines, showcasing the best of the best from around Yorkshire.

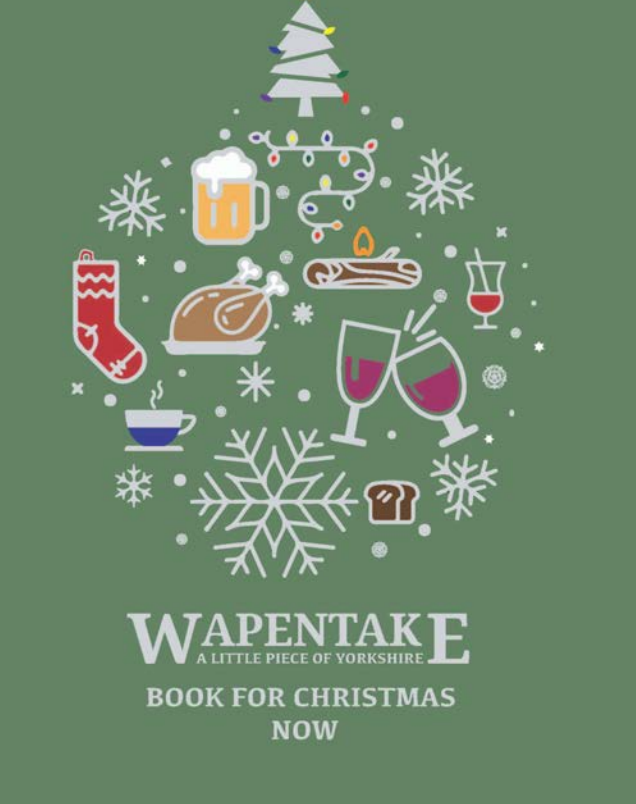
Wapentake strives to offer something for everyone, with vegan and gluten free options for everything on the menu.

Over the festive period, Wapentake have meat & vegan options; two courses for £12.95 or three courses for £15.95. There is also a meat or vegan buffet menu for larger parties (available on request).

You can find Wapentake at 92 Kirkgate, Leeds, LS2 7DJ.

Email: info@wapentakeleeds.com
Telephone: 0113 243 6248

To check out the website or for more information, please [click here](#).





The Woods

WITH A WARM FIRE &
LARGE SELECTION OF
DRINKS, HOW CAN YOU
SAY NO?

Located on Stainbeck Corner in the heart of Chapel Allerton, set over three floors, The Woods offers a wide range of craft beers and pizza baked fresh in its authentic wood fired oven.

Over the festive season, the restaurant is offering a three-course set menu for just £15pp on its first floor, and is offering private hire options for its top floor event space.

It's also worth noting that the restaurant takes pride in choosing the best ingredients from local suppliers and has an extensively stocked bar with cask beer from fantastic local breweries such as Kirkstall, North Brewing, and Bad Co.

The Woods is located at 5 Stainbeck Corner, Chapel Allerton, Leeds, LS7 3PG.

Email: events@thewoodsleeds.co.uk
Telephone: 0113 307 0111

For more information, please [click here](#).





THE MAGICAL CHRISTMAS GUIDE TO
LEEDS PRESENTS . . .

LOCAL CHARITIES FOR THE HOMELESS

There's nothing quite like getting out and offering a helping hand to those in need over the Christmas period.

Throughout the centre and beyond, there are a range of charities that are crying out for volunteers to come in and help them.

Here are some important charities in the Leeds area that you can volunteer with throughout the festive season.



Simon on the Streets

VOLUNTEER OR MAKE A
DONATION - IT ALL MAKES
A DIFFERENCE

Simon on the Streets (SotS) is a registered charity, covering West Yorkshire from the cities of Leeds and Bradford to the town of Huddersfield.

The charity is dedicated to providing support to rough sleepers and helping the most vulnerable members of our community.

SotS receives no statutory funding, and survives on regular donations, internal and external fundraising, and corporate sponsorship and trust funding.

People can volunteer in a range of ways including helping out with the running and stewarding of events, becoming a community advocate, and joining the board of trustees.

You can find Simon on the Streets at 16C/16D Crown House, Armley Road, Leeds, LS12 2EJ.

Telephone: 0113 345 2270

For more information, please [click here](#).





St. Georges Crypt

A LOCAL LEEDS CHARITY HELPING WHERE THEY CAN

As winter sets in we all feel all the more for people sleeping rough. Cold, wet, rain, sleet and snow; it isn't nice at the best of times, but huddled on a street corner it is all magnified. We all want to give, but is there a better way?

Many charities work with the rough sleepers of Leeds, tirelessly seeking them out, offering them food and shelter, support and guidance, and signposting towards a more permanent solution.

One of these, St George's Crypt, has been working with the homeless and vulnerable for 87 years, offering a range of services tailored to ensuring that no-one need sleep rough this winter. They offer three meals a day for residents, a three course lunch for anyone that wants it, hot showers and a range of health, wellbeing and training activities to build people up so they are able to re-engage with the world.

Why not give in kind to the charities that support people across the city? Each Christmas the fuel bill at St George's Crypt is over £3,000; that's a lot of cups of tea and coffee, hot water for showers, radiators to keep the place warm, at least 100 Christmas presents, a fully cooked Christmas lunch, and the support of their staff and volunteers. So this year why not support the people that are helping the homeless off the street and back into safe, secure accommodation?

For more information, please [click here](#).





THE MAGICAL CHRISTMAS GUIDE TO
LEEDS PRESENTS . . .

CHURCH SERVICES AND CAROLS

Nothing says "Christmas" quite like carols with friends and family. This holiday season we have compiled a list of local church services, so you can find the one closest to you.



CHURCH SERVICES AND CAROLS

ADEL

Adel Methodist Church, Holt Lane,
Adel

Dec 24 at 4.30pm: Christingle
Service

ARMLEY

Wesley Road Chapel, Wesley
Road, Armley

Dec 24 at 4pm: Christingle Service
Dec 25 at 10.45am: Christmas Day
Service

Whingate Methodist Church,
Armley

Dec 24 at 11.45pm: Midnight
Communion Service
Dec 25 at 9.30am: Christmas Day
Service

BEESTON

Beeston Hill United Free Church,
Malvern Road, Beeston

Dec 18 at 7pm: Christingle Service
Dec 25 at 11am: Christmas Day
Service

BEESTON CONT'D...

St Andrew's Methodist Church on
Old Lane, Beeston

Christmas Tree Festival
Dec 2 at 10am –12pm: Coffee
morning
Dec 3 at 2pm –4pm
Dec 9 at 10am – 12pm
Dec 10 at 2pm – 4pm
Dec 24 at 4pm: Christingle Service

BRAMLEY

Trinity Methodist Church, Town
Street, Bramley

Dec 24 at 11pm: Midnight
Communion Service
Dec 25 at 10.45am: Christmas Day
Service

CITY CENTRE

Mill Hill Chapel, City Square, Leeds
City Centre

Dec 3 & 10 at 10:30am: Advent
Sunday Services
Dec 17 at 6:30pm: Family
Christmas Carols
Dec 19 at 1.00pm: Baroque
Ensemble
Dec 24 at 10.45am: Christmas Eve
Service



CHURCH SERVICES AND CAROLS

COOKRIDGE

**Cookridge Methodist Church, on
Otley Old Road**

**Dec 17 at 4pm: Carol Service
Dec 24 at 3pm: Christingle Service
Dec 24 at 11.45pm: Midnight
Communion
Dec 25 at 10am: Christmas Day
Service**

FARSLEY

**Farsley Community Church on Back
Lane, Farsley**

**Dec 3 at 3pm: Big Sing of Christmas
Carols and songs led by the Vision
choir, followed by tea and cakes. Any
donations received will go to Martin
House Children's Hospice.
Dec 24 at 6pm: Christingle Service
Dec 25 at 10.30am: Christmas Day
Service**

HEADINGLEY

**Headingley Methodist Church, on
Otley Road**

**Dec 17 at 2.30pm: Carol Service,
followed by tea and cakes.
Dec 24 at 11.15pm: Midnight
Communion Service
Dec 25 at 9.30am: Christmas Day
Service**

HORSFORTH

**Central Methodist Church on Town
Street, Horsforth**

Dec 10 at 2pm: Carol Service

**The Grove Methodist Church on
Town Street, Horsforth**

**Dec 17 at 6pm: Carol Service
Dec 25 at 10.30am: Christmas Day
Service**

**Woodside Methodist Church,
Outwood Lane, Horsforth**

**Dec 25 at 9.45am: Christmas Day
Service**



CHURCH SERVICES AND CAROLS

HYDE PARK

Hyde Park Methodist Church, Hyde Park Road

**Dec 17 at 5pm: Nativity Service
Dec 25 at 11am: Christmas Day Service**

PUDSEY

St Andrew's Methodist Church, Pudsey

**Dec 10 at 6pm: Carol Service
Dec 24 at 11.45pm: Midnight Communion
Dec 25 at 10.30am: Christmas Day Service**

RODLEY

The Church in Rodley, on Wesley Terrace

**Dec 17 at 4pm: Christingle Service
Dec 25 at 10am: Christmas Day Service**

STAINBECK

Stainbeck United Reformed Church, Stainbeck Road, Stainbeck

**Dec 2 at 10.30am – 12.30pm: Christmas Market with Bacon Butties and Santa
Dec 16 at 3.30pm – 5.00pm: Messy Christingle
Dec 17 at 10.45am: Christmas Nativity
Dec 17 at 6.30pm: Carols by Candlelight
Dec 21 at 6.00pm: Carol Singing on the Estate
Dec 24 at 11.30pm: Midnight Communion
Dec 25 at 10.00am: Christmas Day**

WORTLEY

Highfield Methodist Church, Highfield Avenue, Wortley

**Dec 17 at 6pm: Carol Service with Vision Choir
Dec 25 at 11am: Christmas Day Service**

Lower Wortley Methodist Church, Branch Road, next to the ring road

Dec 25 at 10.30am: Christmas Day Service



THANK YOU FOR CHECKING OUT OUR GUIDE!

We hope this guide will help you
enjoy the holiday season in Leeds.

From everyone at Pickard
Properties, have a very Happy
Holiday, a Merry Christmas and a
wonderful New Year!